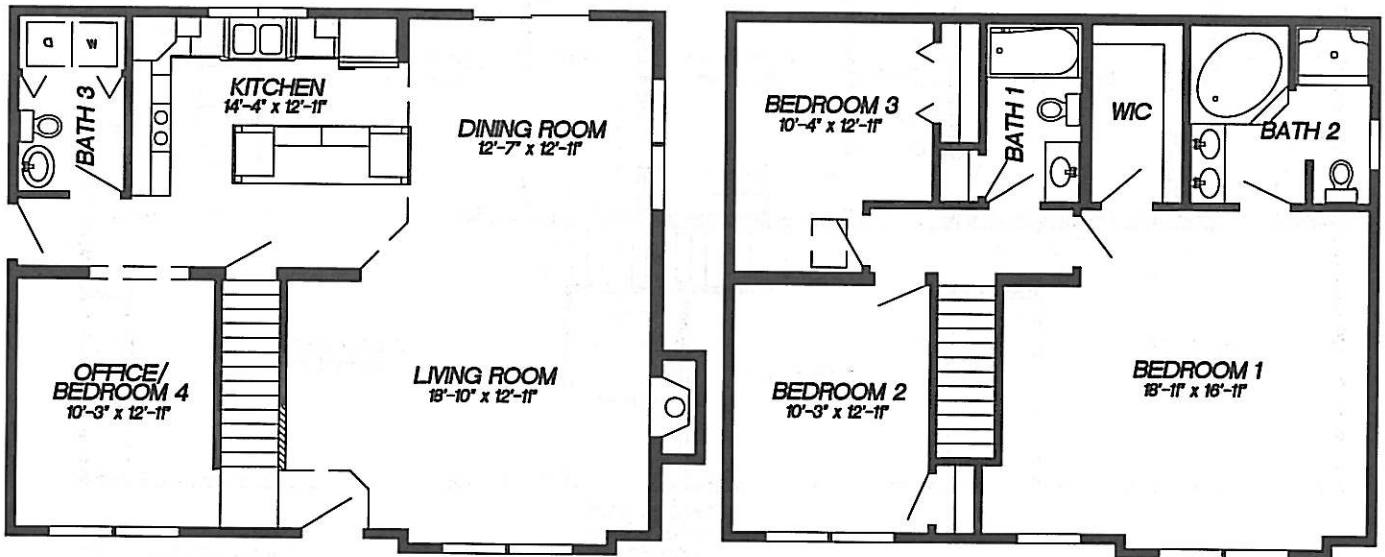


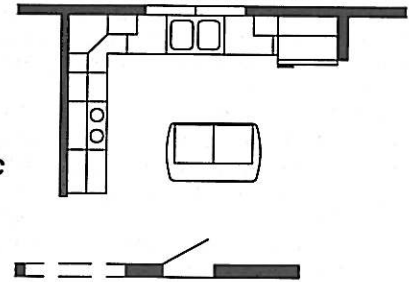
# PLATTSBURGH WHOLESALE HOMES INTRODUCES: "THE LAKE PLACID"



**NEW ERA 2-STORY**  
27'-6" / 28'-3" x 34'-0"  
1888 SQ. FT

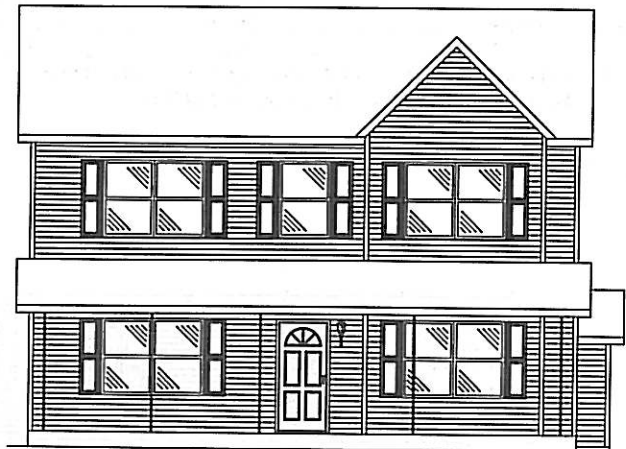
7/12 ROOF PITCH	\$1200.00	_____	STD. 5/12 ROOF PITCH	N/C
DORMER W/9' BUMPOUT	\$2875.00	_____	NO DORMER OR BUMPOUT	N/C
HERITAGE HILL SIDING	\$1792.00	_____	STD. VISION PRO SIDING	N/C
WINDOW GRILLS	\$218.00	_____	STD. WINDOWS W/O GRILLS	N/C
FULLSTONE GAS F.P.	\$3900.00	_____	NO FIREPLACE OR BUMPOUT	N/C
CUSTOM MAPLE KITCHEN	\$3705.00	_____	STD. BEDFORD OAK	N/C
MAPLE OGEE EDGE KIT.	\$495.00	_____	STD. CURV-FLO TOP	N/C
MAPLE VANITY BATH #1	\$120.00	_____	BEDFORD OAK	N/C
MARBLE TOP BATH #1	\$71.00	_____	CURV-FLO TOP	N/C
MAPLE VANITY BATH #2	\$160.00	_____	BEDFORD OAK	N/C
MARBLE TOP BATH #2	\$242.00	_____	CURV-FLO TOP	N/C
SHOWER DOOR BATH #2	\$120.00	_____	NO SHOWER DOOR	N/C
PEDISTOL SINK BATH #3	\$242.00	_____	STD. VANITY	N/C

STD. KITCHEN LAYOUT



FINISH PACKAGE \_\_\_\_\_ \$4500.00  
FINISH PACKAGE INCLUDES HOOK UP UNDER HOME,  
WATER, SEWER, POWER, AND BASEMENT STAIRS

PLATTSBURGH WHOLESALE HOMES  
SERVING THE NORTH COUNTY  
FOR OVER 40 YRS.



PLATTSBURGH WHOLESALE HOMES  
7109 RT. 9 PLATTSBURGH, NY 12901 (1-800-640-1833)